

CASE STUDY

RioTinto

ABOUT

Rio Tinto is a pioneer in metals and mining and has projects and operations spanning across 36 countries. It is recognised as an innovator that embraces technology and was named one of 2019's most innovative companies by Boston Consulting Group.

SUCCESS METRICS (100% ACHIEVED)

- ✓ Globally accessible to the right people
- ✓ Intuitive, easy to use interface
- ✓ Global site data imported and useable
- ✓ Thorough user testing with site buy-in

BENEFITS

- 1 Centralised data management system
- 2 Flexibility to set up users with different access
- 3 Track changes and run reports
- 4 Single Sign On access and easy-to-use interface
- 5 Accessing and visualising geospatial data

CHALLENGE

To find a secure and centralised cloud based solution to manage important datasets across all sites globally, and ensure that site and corporate users have appropriate security access.

"The Decipher product had a number of features that we were looking for already available through their existing modules. On top of this, the Decipher team showed a keen willingness to work through all of our requirements and develop the additional features we needed. A fully functional MVP based on a subset of Decipher modules was provided within the project timeframe."

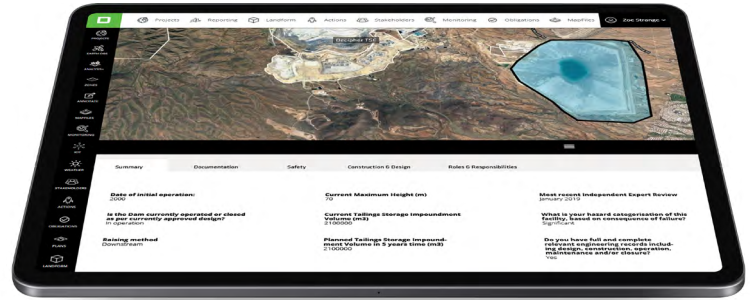
Jon Lapwood

Principal Advisor, Geotechnical Engineering Growth and Innovation, Rio Tinto

PROPOSED SOLUTION

Tailings Storage Facilities

Empowering users with data and knowledge to effectively monitor tailings storage facilities globally



Commonly deployed features for Clients

- View real-time TSF data and alerts related device data such as piezometers, monitoring bores, water levels and vibration
- Monitor land subsidence and movement utilising remote sensing such as satellite derived InSAR datasets
- Visualise real-time LiDAR data and specific insights into dam movement utilising hardware and data providers such as GlassTerra
- Store all of your tailings data in the one place, providing your team with a single source of truth
- Upload and reference key documentation
- Easily visualise your facilities across multiple sites in a single screen on a geospatial map with an ability to export for reporting
- Effectively monitor your facilities with our spatial data such as InSAR, LiDAR, DEM and more
- Capture a wide range of monitoring data and indicators such as surface and groundwater, decant pond water levels and quality, and embankment conditions
- Capture, track and store obligations and conditions around your license to operate to manage your key risks and actions
- Action and task delegation for data collection with reminder and escalation notifications
- Maintain and track environmental monitoring compliance limits and any exceedances
- Understand, manage and engage with all of your stakeholders with one central repository of information
- Convert your engagements into actionable outcomes
- Using IBM's Weather Channel data streamed directly into Decipher, you can forecast, plan and track your sites activities
- Create corporate report templates and meet requests for data provision from industry groups such as ICMM, Global Tailings Portal, PRI, and UNEP
- Integration capability with third party systems or public portals such as the Global Tailings Portal

Comprised of comprehensive modules including Earth Observations, InSAR, Landform and Erosion, Map Files, Obligations, Environmental Monitoring and Sampling, Stakeholders and Weather and Blasts to deliver an integrated approach to reducing risk and increasing compliance. Take a three pronged approach to tailings with macro, monitoring and micro.

MACRO

Lightweight database of key data including TSF, actions, stakeholders and compliance

MONITORING

InSAR, chemistry, satellite imagery, water quality and quantity

MICRO

Lidar, radar, IoT

Speak to our expert team to learn more or to book your FREE demo today

decipher.com.au